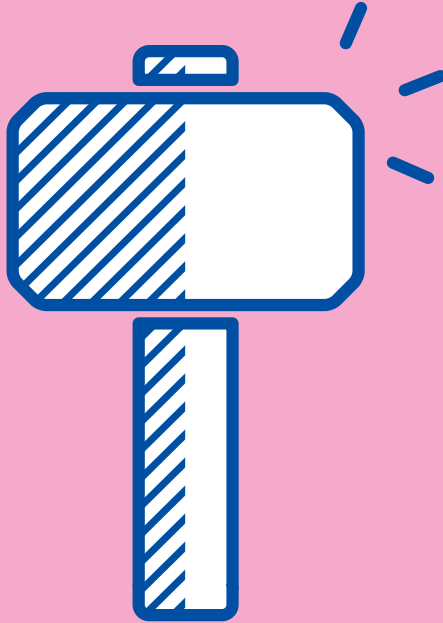


**WORLD  
CANCER  
DAY 2016**

**WE CAN**



**BUILD A QUALITY  
CANCER WORKFORCE**



**ON 4 FEB**  
#WeCanICan  
#WorldCancerDay

**WWW.WORLDCANCERDAY.ORG**

# WE CAN — BUILD A QUALITY CANCER WORKFORCE



**Inadequate education of healthcare providers is one of the most pervasive and urgent obstacles to address in delivering quality cancer care<sup>1</sup>.**

Investment in continuing professional development (CPD) to equip healthcare workers with the appropriate tools and knowledge to deliver best practice services across the cancer care continuum is vital. This includes building expertise and capacity amongst health professionals to recognise the early signs and symptoms of some cancers, as well as appropriate early detection measures; ensuring the safe and proper administration of chemotherapy and other cancer treatment modalities including radiotherapy and surgery; and delivering palliative care and pain and distress management.

Whilst education can include both conventional teaching methods as well as e-learning platforms and multimedia tools, where possible it should also build on existing materials, training networks and infrastructure<sup>2-4</sup>.

**THE CANCER WORKFORCE  
CAN BE EQUIPPED WITH THE  
SKILLS, KNOWLEDGE AND  
COMPETENCIES REQUIRED  
TO MEET THE NEEDS OF  
INDIVIDUALS AND COMMUNITIES  
ACROSS THE CANCER  
CONTINUUM.**

1. Global Health Workforce Alliance. (2013). A universal truth: no health without a workforce. Geneva: World Health Organization.
2. C-Change. (2012). A National Strategy to Strengthen the Cancer Workforce: Position Statement and Call to Action. [http://c-change.together.org/Websites/cchange/images/Workforce/WORKFORKCE\\_POSITION\\_STATEMENT\\_-\\_with\\_endorsements\\_-\\_February\\_28\\_2013.pdf](http://c-change.together.org/Websites/cchange/images/Workforce/WORKFORKCE_POSITION_STATEMENT_-_with_endorsements_-_February_28_2013.pdf)
3. iheed Institute. (2012). Preparing the next generation of community health workers: The power of technology for training. iheed Institute, the Barr Foundation, the mHealth Alliance, and the MDG Health Alliance. Cork, Ireland: Dalberg Global Development Advisors.
4. The Recife Political Declaration on Human Resources for Health (HRH). [http://www.who.int/workforcealliance/forum/2013/recife\\_declaration\\_13nov.pdf](http://www.who.int/workforcealliance/forum/2013/recife_declaration_13nov.pdf)